

POWERFLEX®

PART NUMBER

PFR19-107

DESCRIPTION

REAR BEAM MOUNT

INSTALLATION GUIDE

Contents (parts per pack):

- 2 x Polyurethane Bushes
- 2 x Stainless Steel Sleeves
- 1 x PTFE/Silicone Grease

Please read the complete fitting instructions and check package components before fitment. These fitting instructions are to be used as a guide and in conjunction with workshop manual.

It is recommended that:

- all work to be carried out by a licensed technician;
- all safety precautions adhered to;
- wheel alignment to be checked and adjusted as required after any suspension work.
- All fasteners must be tensioned to manufacturer's torque settings.

Fitting Instructions:

1. Remove the original rubber bush from the rear beam.
2. Clean any dirt and corrosion from the bore of the beam and file off any sharp edges.
3. Push the polyurethane part into the beam from underneath with the small diameter first, as shown in figure 1. There is likely to be a pop noise as the polyurethane part is pushed through to the top of the beam. **TIP:** Apply some washing-up liquid to the polyurethane part to aid in fitting.
4. Apply some of the supplied grease to the bore of the polyurethane part, and insert the stainless steel sleeve until it sits flush within the bush.
5. Tension all hardware to manufacturers recommended torque settings.

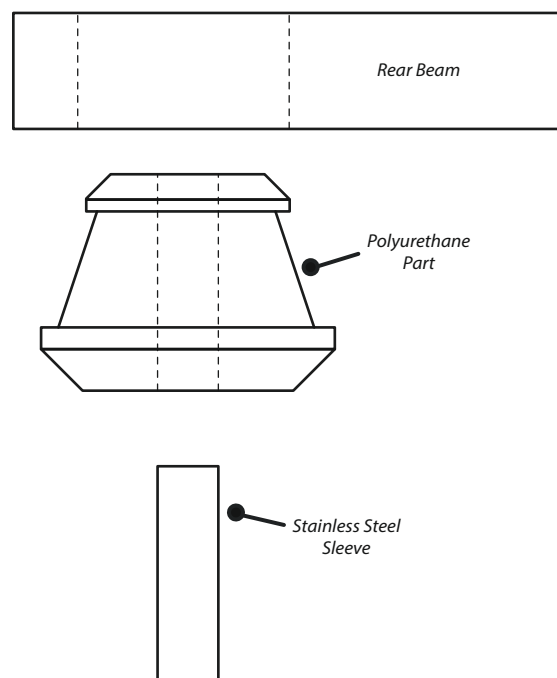


Figure 1